



## UNFCCC Country Brief 2014: Tunisia

### A. Key Country Indicators

	Global Rank	Global share	
CO2 emissions from fuel combustion <sup>1</sup> (2012)	75	0.07%	23 Mt CO2 Eq.
Population <sup>2</sup> (2013)	79	0.15%	10.89 Million
CO2 emissions / Pop. <sup>1</sup> (2012)	88		2.14 tCO2 per capita
GDP Size <sup>2</sup> (2013)	74	0.12%	Based on PPP
GDP Size <sup>2</sup> (2013)	82	0.06%	Based on exchange rates
UNDP human development index <sup>3</sup> (2012)	94		
GDP Structure <sup>2</sup> , % (2013)	Agriculture: 9, Industry: 29, Services: 62		
Share of GDP <sup>2</sup> , % (2012)	Imports: 58, Exports: 49		

### B. CO2 Emissions and Related Indicators

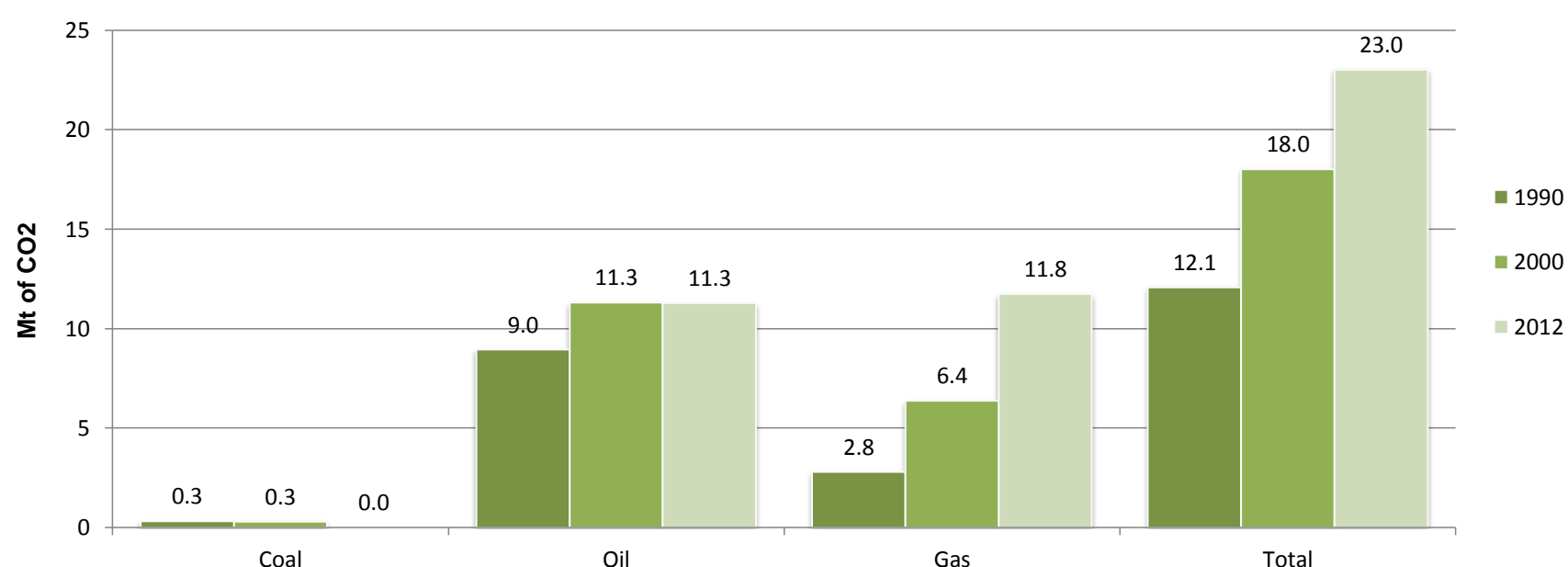
	Trend 1990-2012	1990	2000	2005	2010	2012	Change (%) 1990-2012	Growth rate (% per year) 1990-2012
Population <sup>2</sup>		8,154,400	9,563,500	10,029,000	10,549,100	10,777,500	32.2	1.3
GDP (billions 2005 USD PPP) <sup>2</sup>		40.82	64.87	80.72	100.42	101.95	149.8	4.2
TPES (Mtoe) <sup>1</sup>		4.95	7.31	8.31	10.08	9.89	100.0	3.2
CO2 emissions from fuel combustion (Mt) <sup>1</sup>		12.08	18.02	20.19	23.05	23.04	90.7	3.0
GHG emissions (Mt CO2 eq.) <sup>4</sup>		20.78	30.72	33.54	37.64	-	-	-
GDP / Pop.(2005 USD PPP per capita)		5,006	6,783	8,049	9,519	9,460	89.0	2.9
TPES / Pop. (toe per capita)		0.61	0.76	0.83	0.96	0.92	51.3	1.9
CO2 fuel comb. / Pop. (t CO2 per capita)		1.48	1.88	2.01	2.19	2.14	44.3	1.7
CO2 fuel comb. / GDP (kg CO2 / 2005 USD PPP)		0.30	0.28	0.25	0.23	0.23	-23.6	-1.2

### C. Energy Profile<sup>1</sup>

	Trend 1990-2012	Mtoe					Change (%) 1990-2012	Ratio of imports/exports to production (%)	
		1990	2000	2005	2010	2012	1990	2012	
Energy production		5.73	6.63	6.68	8.15	7.26	26.8	-	
Energy imports		2.98	4.39	5.42	6.04	6.71	125.3	92.5	
Energy exports		3.85	3.58	3.65	3.97	3.73	-3.1	51.3	

	Trend 1990-2012	Mtoe					Change (%) 1990-2012	Share of TPES (%)	
		1990	2000	2005	2010	2012	1990	2012	
Oil		2.99	3.55	4.09	3.90	3.68	23.1	60.4	
Oil Shale		0.00	0.00	0.00	0.00	0.00	-	0.0	
Coal		0.08	0.08	0.00	0.00	0.00	-100.00	1.7	
Peat		0.00	0.00	0.00	0.00	0.00	-	0.0	
Gas		1.23	2.73	3.09	4.82	5.04	308.71	24.9	
Hydro energy		0.00	0.01	0.01	0.00	0.01	139.13	0.1	
Nuclear energy		0.00	0.00	0.00	0.00	0.00	-	0.0	
Combust. renewables & waste		0.64	0.93	1.12	1.20	1.06	66.78	12.9	
Wind/Solar/Geothermal		0.00	0.00	0.00	0.04	0.05	-	0.0	
Other (electricity trade)		0.00	0.00	0.00	0.00	0.00	950.00	0.0	
TPES		4.95	7.31	8.31	10.08	9.89	100.03	100.0	

### D. CO2 Emissions by Fuel Type<sup>1</sup>



<sup>[1]</sup> Source : International Energy Agency (IEA)

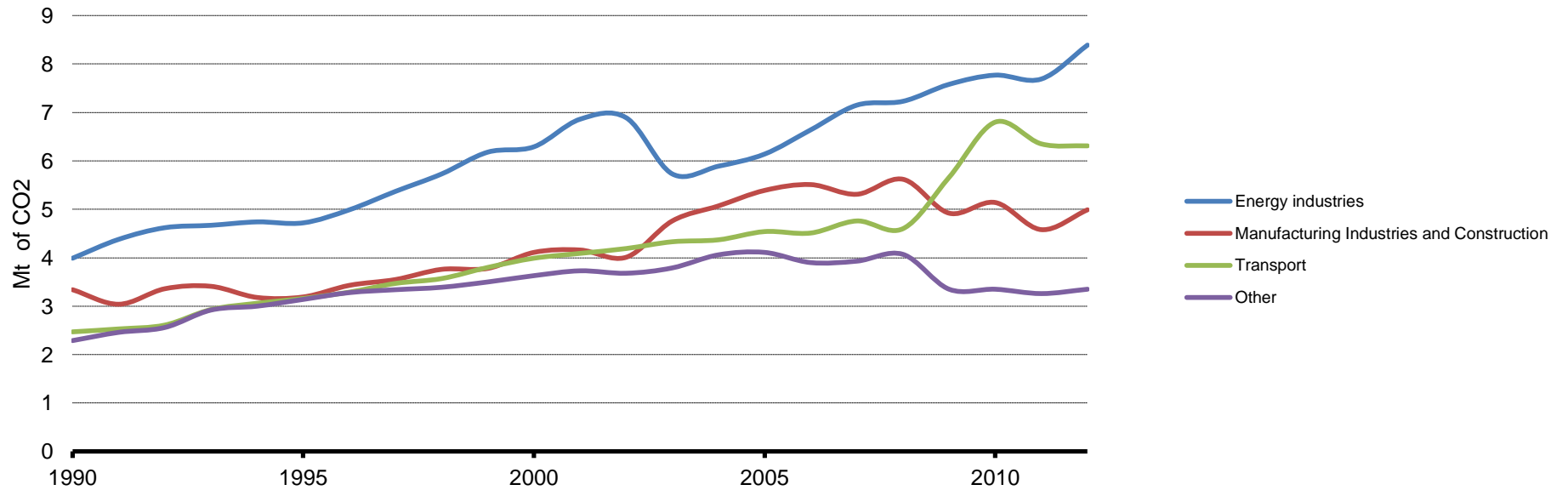
<sup>[2]</sup> Source : World Bank, World Development Indicators

<sup>[3]</sup> Source : UNDP, Human Development Indicators

<sup>[4]</sup> Source : Emissions Database for Global Atmospheric Research (EDGAR)



E. Trends in CO2 Emissions by Sector<sup>5</sup>

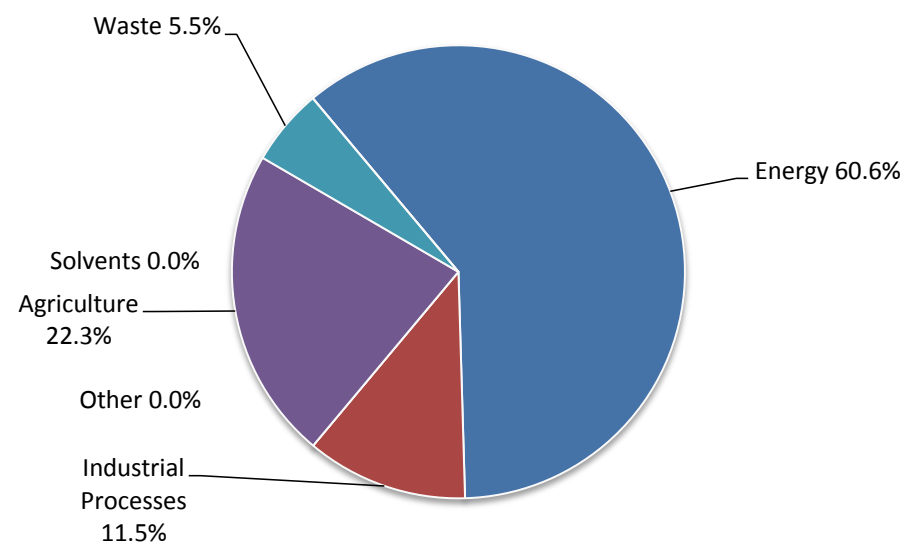


F. Emissions by sector<sup>6</sup>

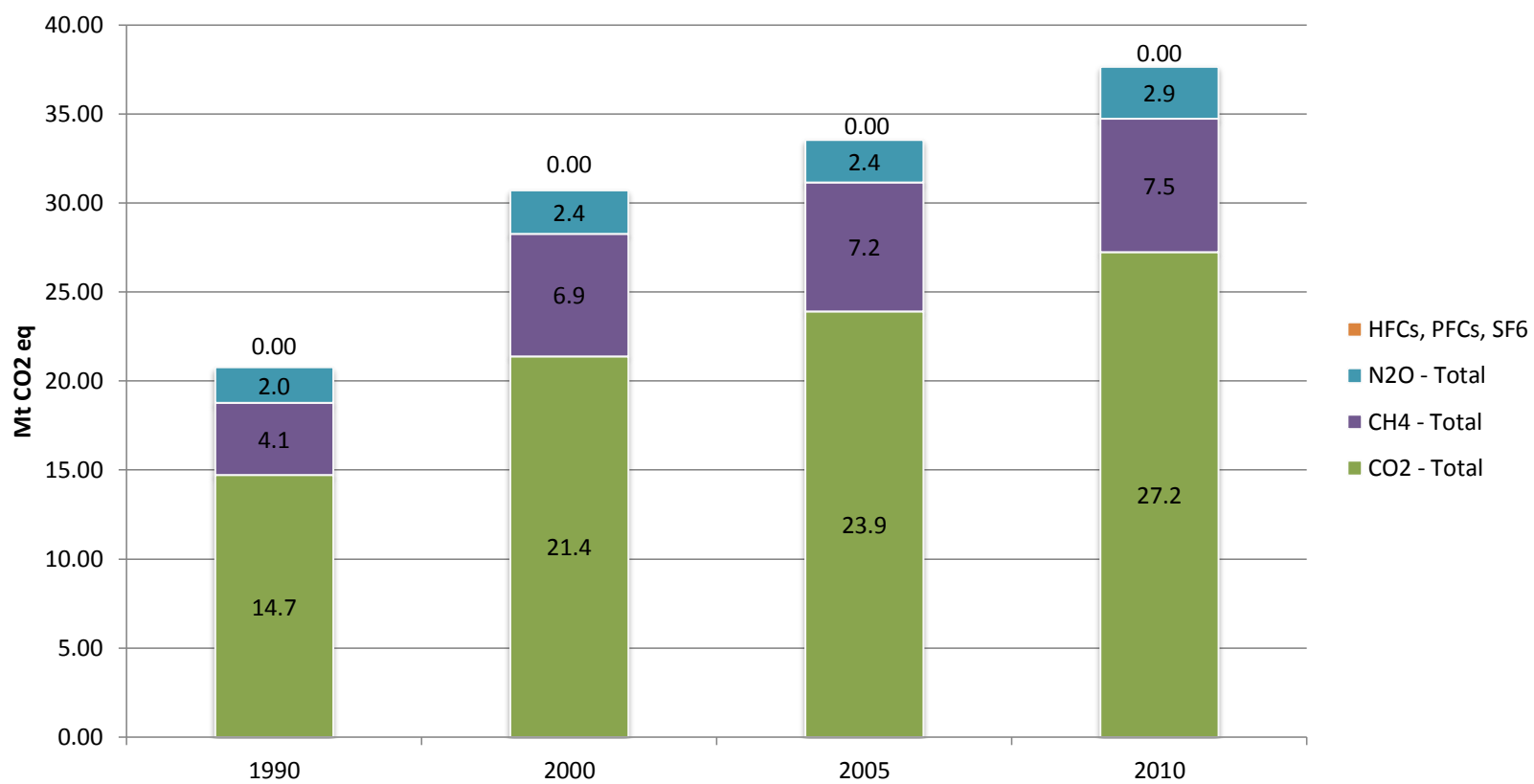
Latest year for which data (submitted to the UNFCCC as part of a National Communication or inventory submission) is available

**2000**

Category	GHG Emissions (kt CO2 eq.)
1. Energy	20,763.53
2. Industrial Processes	3,954.39
3. Solvents	-
4. Agriculture	7,637.63
5. LULUCF	-
5bis Land-Use Change and Forestry	-2,142.01
6. Waste	1,882.32
7. Other	-
GHG Total with LULUCF	32,095.86
GHG Total without LULUCF	34,237.87



G. Emissions of CO2, CH4, N2O, HFCs, PFCs and SF6<sup>7</sup>



H. Further Information

[UNFCCC GHG Data Interface](#)  
[Annual GHG Inventory Submissions](#)  
[Submitted INDCs](#)  
[Sixth National Communications](#)  
[Submitted Biennial Reports](#)  
[Focal Point and Ratification Status of the Convention and the Protocol](#)

[IEA Data Services](#)  
[World Bank Data](#)  
[UNDP Open Data](#)  
[EDGAR](#)

<sup>[5]</sup> Source : International Energy Agency (IEA)  
<sup>[6]</sup> Source : UNFCCC  
<sup>[7]</sup> Source : Emissions Database for Global Atmospheric Research (EDGAR)